

## 1-9-2. High Static Pressure Ducted Type S-180PE3R5B, S-200PE3R5B, S-224PE3R5B

### 1-9-2-1. External Static Pressure Setting

Choose one of the methods (selection of “a”, “b”, “c” within the range of dotted line as shown in the flowchart below) and make settings.

a. No setting changes:

When using as it is factory preset at shipment.

(If resetting after external static pressure setting once, it might be different from factory preset.)

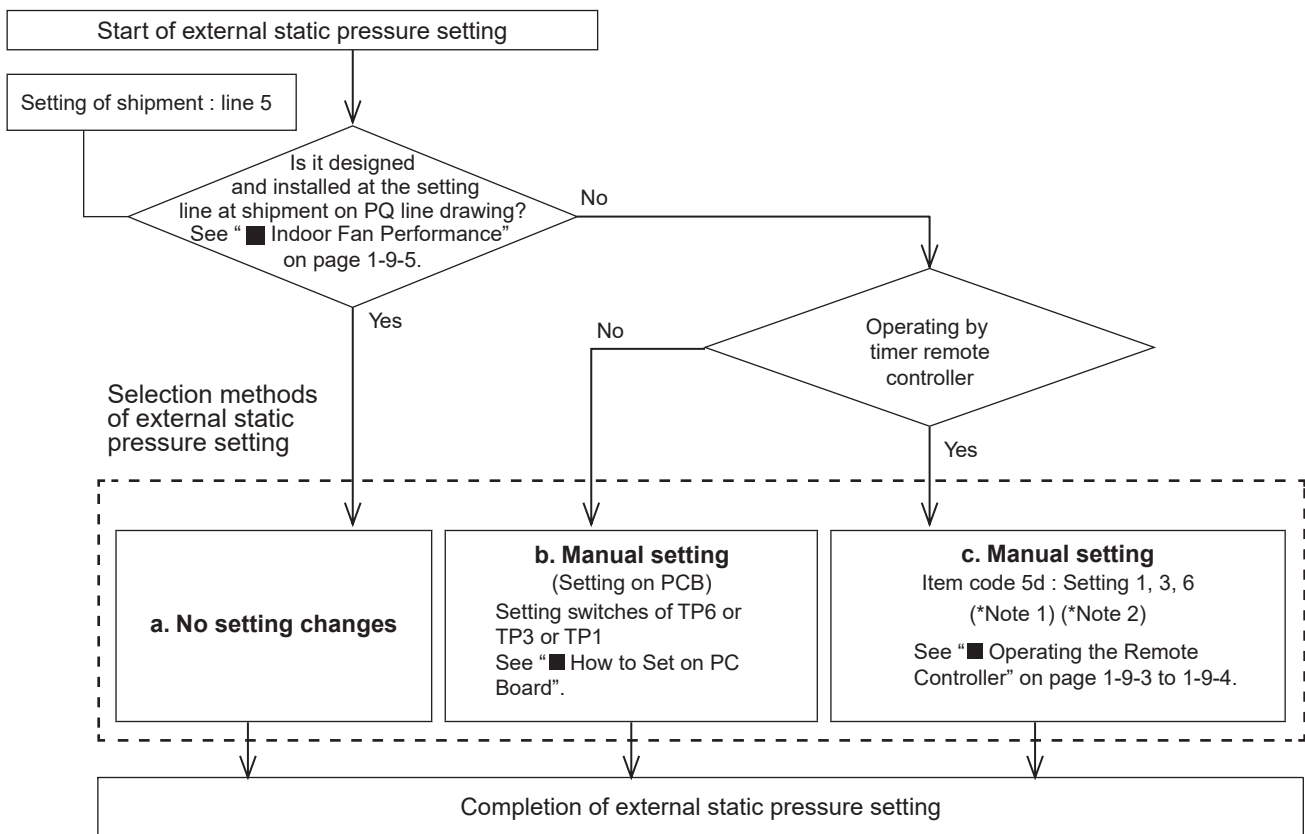
b. Manual setting (on PCB):

This is static pressure setting excepting factory preset at shipment. Dip switch select method.

c. Manual setting (by timer remote controller):

Static pressure setting excepting factory preset at shipment.

#### Flow of External Static Pressure



#### NOTE

(1) See the Tables 1-9-2, 1-9-3 and Fig. 1-9-2 for details on the relationship between the value of item code “5d” and the external static pressure.

(2) When set in group control (connecting multiple indoor units with one timer remote controller), set each indoor unit to item code “5d”.

When amending the setting after selecting [ b. Manual setting] (due to airflow path changes, etc.), it is necessary to cancel [b. Manual setting] (switching OFF positions).

When [b. Manual setting] has not been cancelled, [c. Manual setting] will be activated if selected, but [b. Manual setting] takes precedence when the power is switched back on after power outages, etc.

- **Make sure the external static pressure is in a range of specifications. Then proceed the external static pressure setting.**

**Improper settings can cause noise, a shortage of airflow volume and water leakage.**

**See the Fig. 1-9-2 for the external static pressure setting range.**

- **Be sure to set the [External Static Pressure Setting] once again after amending the airflow path for the duct or air outlet after setting the external static pressure.**



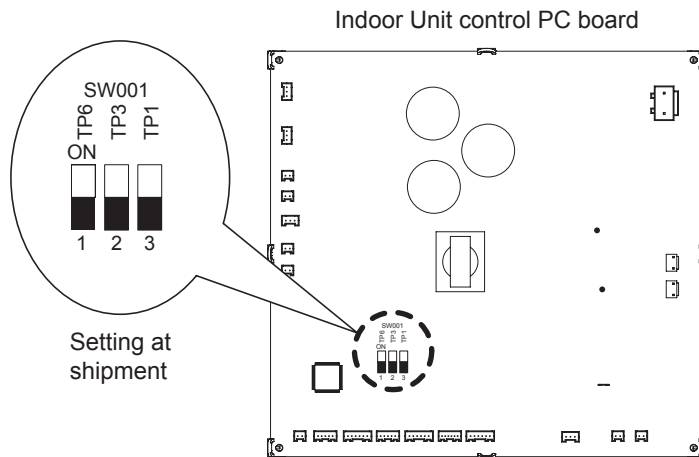
**CAUTION**

**How to Set on PC Board**

1. Turn off the power breaker to halt the supply of electricity to the PC board.
2. Open the lid of the electrical component box and confirm the location where the Select switch on the indoor unit control PCB is placed. (Fig. 1-9-1)
3. Set the On/Off switches in the Off position which are now set in the On position.  
Select the positions of the Select SW001 switches respectively to make the desired external static pressure settings referring to the Table 1-9-1.

**Table 1-9-1 External static pressure SW setting**

External static pressure at the time of rated airflow volume			SW001		
180	200	224	TP6	TP3	TP1
150Pa	180Pa	200Pa	ON 1	2	3
100Pa	120Pa	130Pa	1	ON 2	3
60Pa	75Pa	75Pa	1	2	ON 3



**Fig. 1-9-1**

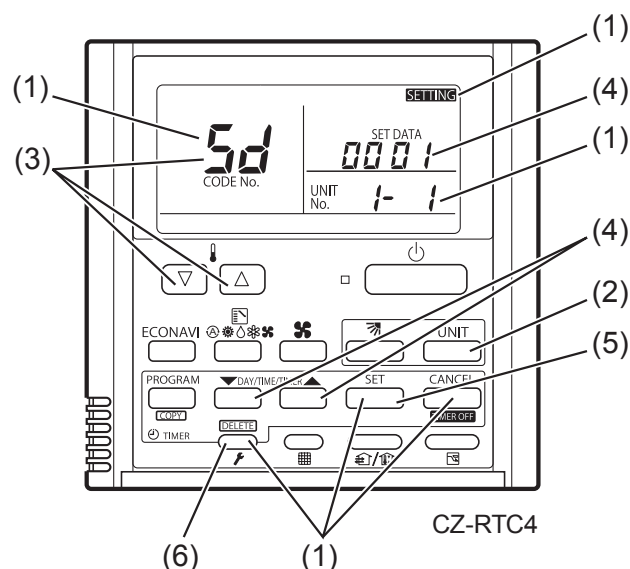
**Operating the Timer Remote Controller (CZ-RTC4)**

**How to set the external static pressure**

- (1) Press and hold down the , and buttons simultaneously for 4 or more seconds.  
( **SETTING**, the Unit No., Item Code and Detailed Data will blink on the LCD display.)
- (2) The indoor unit numbers in the group control will be sequentially displayed whenever the Unit Select button is pressed .  
Only the fan motor for the selected indoor unit will operate during this time.
- (3) Specify the “**5d**” item code by pressing the / buttons for the temperature setting buttons and confirm the values.  
(“**0001**” set at shipment)
- (4) Press the buttons for the time to amend the values for the set data.  
See the Table 1-9-2 and Fig.1-9-2 and select a value “**0006**”, “**0003**” or “**0001**”.
- (5) Press the button.  
The display will stop blinking and remain illuminated.
- (6) Press the button. The fan motor will stop operating and the LCD display will return to the normal stop mode.

**Table 1-9-2 Setting the external static pressure**

Indoor unit			Item code
180	200	224	
External static pressure of the rated air flow volume			<b>5d</b>
150 Pa	180 Pa	200 Pa	<b>0006</b>
100 Pa	120 Pa	130 Pa	<b>0003</b>
60 Pa	75 Pa	75 Pa	<b>0001</b>



**NOTE:**

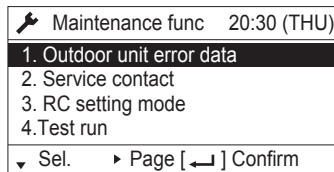
Failure to set this parameter may result in decreased airflow and condensation.

## ■ Operating the High-spec Wired Remote Controller (CZ-RTC5B)

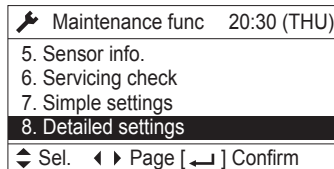


### How to set the external static pressure

1. Keep pressing the , and buttons simultaneously for 4 or more seconds. The "Maintenance func" screen appears on the LCD display.

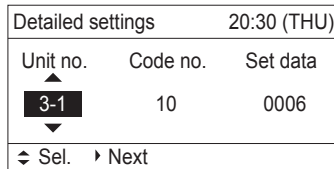


2. Press the or button to see each menu. If you wish to see the next screen instantly, press the or button. Select "8. Detailed settings" on the LCD display and press the button.

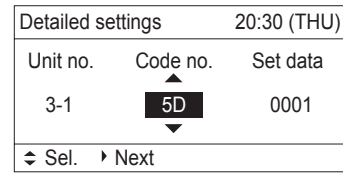


The "Detailed settings" screen appears on the LCD display.

Select the "Unit no." by pressing the or button for changes.



3. Select the "Code no." by pressing the or button. Change the "Code no." to "5D" by pressing the or button (or keeping it pressed).



4. Select the "Set data" by pressing the or button. Select one of the "Set data" among "0006", "0003" or "0001" according to the desired external static pressure setting by pressing the or button. (See Table 1-9-3 and Fig. 1-9-2.) Then press the button.

Table 1-9-3 Setting the external static pressure

Indoor unit			Item code
180	200	224	5D
External static pressure of the rated air flow volume			
150 Pa	180 Pa	200 Pa	0006
100 Pa	120 Pa	130 Pa	0003
60 Pa	75 Pa	75 Pa	0001

5. Select the "Unit no." by pressing the or button and press the button. The "Exit detailed settings and restart?" (Detailed setting-end) screen appears on the LCD display. Select "YES" and press the button.

