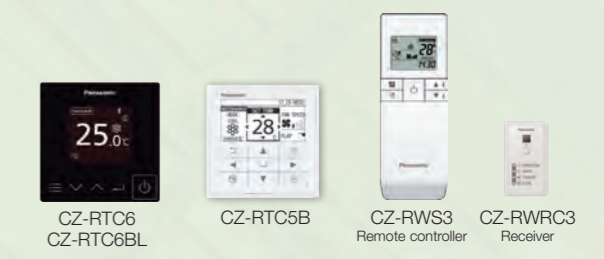


G1 TYPE Floor Console



Compact and versatile, this system is capable of being installed in an area with limited space. It is a perfect solution for retrofit, replacing existing radiator panels.

Optional accessory



Technical focus

- Clean and stylish design with slim depth
- Modern matt white color panel
- Flexible and easy installation
- Washable air filter
- Quiet operation
- Dry mode to reduce humidity in rooms
- nanoe™ X with nano-technology, nano-sized electrostatic atomised water particles purify the air in the room

Stylish and simple

The stylish and compact unit profile, also used for residential market range, is easy to integrate into any design of building.

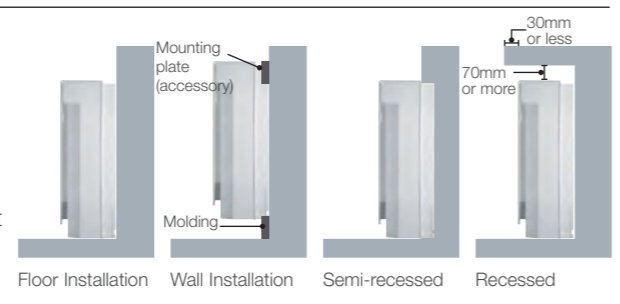


Dimension:
W x H x D = 750 x 600 x 207mm
Weight:
14kg

Flexible easy installation

Four different mounting styles possible: Exposed (floor or wall), semi-recessed and recessed

The compact unit can be installed within a limited space, such as under a window. Thus, it is a perfect solution to replace an existing boiler system radiator.

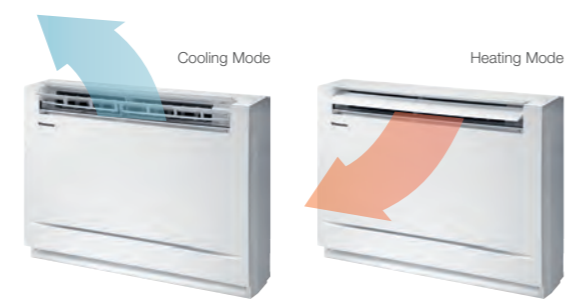


Functions for comfort

- Double Air Flow direction to maximize comfort
- Self-cleaning function

Self-cleaning function.

Self cleaning function can be pre-scheduled with remote controller, up to a maximum of 90 minutes following cooling/dry operation. Air flow will not blow directly at occupants during self-cleaning.

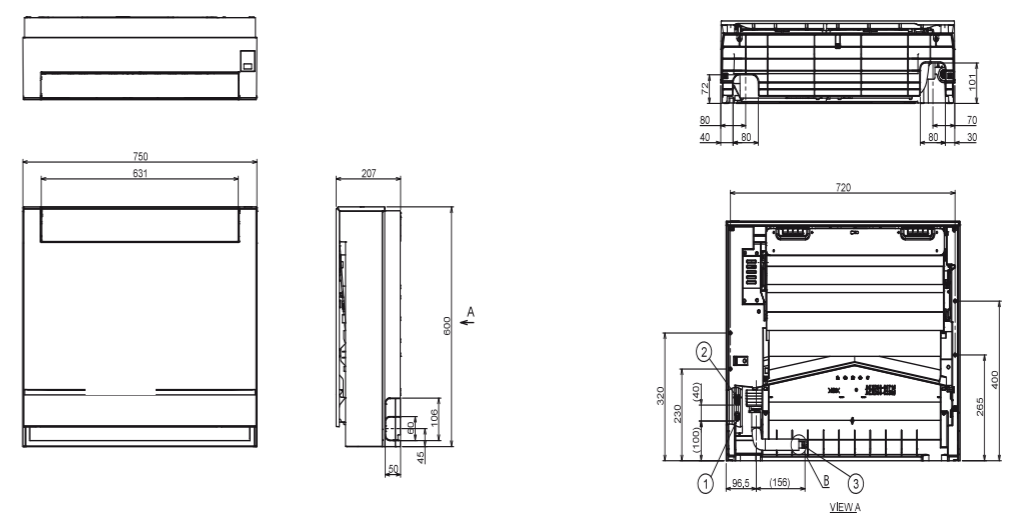


Model Name		S-22MG1E5N	S-28MG1E5N	S-36MG1E5N	S-45MG1E5N	S-56MG1E5N	
Power source		220/230/240 V, 1 phase - 50 / 60 Hz					
Cooling capacity	kW	2.2	2.8	3.6	4.5	5.6	
	BTU/h	7,500	9,600	12,300	15,400	19,100	
Heating capacity	kW	2.5	3.2	4.2	5.0	6.3	
	BTU/h	8,500	10,900	14,300	17,100	21,500	
Power input	Cooling kW	0.018/0.018/0.018	0.018/0.018/0.018	0.021/0.021/0.021	0.023/0.023/0.023	0.025/0.025/0.025	
	Heating kW	0.018/0.018/0.018	0.018/0.018/0.018	0.022/0.022/0.022	0.024/0.024/0.024	0.026/0.026/0.026	
Running current	Cooling A	0.18/0.18/0.18	0.18/0.18/0.18	0.21/0.21/0.21	0.23/0.23/0.23	0.25/0.25/0.25	
	Heating A	0.18/0.18/0.18	0.18/0.18/0.18	0.22/0.22/0.22	0.24/0.24/0.24	0.26/0.26/0.26	
Fan	Type	Cross flow		Cross flow	Cross flow	Cross flow	
	Air flow rate (H/M/L)	552/450/360	552/450/360	582/492/360	630/540/390	720/570/390	
	L/s	153/125/100	153/125/100	162/137/100	175/150/108	200/158/108	
	Motor output kW	0.03	0.03	0.03	0.03	0.03	
Sound power level (H/M/L)	dB	52/49/44	52/49/44	53/50/44	56/52/45	58/53/45	
Sound pressure level (H/M/L)	dB(A)	38/34/29	38/34/29	39/35/29	42/37/30	44/38/30	
Dimensions *	H x W x D	mm 600 x 750 x 207					
	Liquid	mm (inches)	Ø6.35 (Ø1/4)	Ø6.35 (Ø1/4)	Ø6.35 (Ø1/4)	Ø6.35 (Ø1/4)	Ø6.35 (Ø1/4)
	Gas	mm (inches)	Ø12.7 (Ø1/2)	Ø12.7 (Ø1/2)	Ø12.7 (Ø1/2)	Ø12.7 (Ø1/2)	Ø12.7 (Ø1/2)
Pipe connections	Drain piping	VP-20					
	Net weight *	kg 14					

GLOBAL REMARKS	Rated conditions:		Cooling	Heating
	Infrared remote controller (CZ-RWS3) doesn't need receiver as an optional. Receiver is included in the unit shipment.	Infrared remote controller (CZ-RWS3) doesn't need receiver as an optional. Receiver is included in the unit shipment.	27°C DB / 19°C WB	20°C DB
			35°C DB / 24°C WB	7°C DB / 6°C WB

G1 TYPE FLOOR STANDING Dimensions

- 1 Refrigerant piping (liquid pipes): Ø6.35 (flared)
- 2 Refrigerant piping (gas pipes): Ø9.52 (flared)
- 3 Drain hose



unit: mm